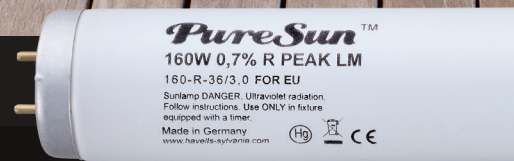


PureSun™
SYLVANIA



Next generation lamp technology

For deeper, longer-lasting tans

SYLVANIA

Your global partner for full spectrum lighting solutions

We are Havells Sylvania, one of the world's major lighting groups. We strive to improve the way people live by enabling them to enjoy better lighting in a more sustainable manner. Today, we continue to build on our exceptional reputation as an innovator and creator of high-efficiency, energy-saving, light sources and luminaires, by providing full spectrum lighting solutions tailored to individual needs.



The Sylvania brand is part of the Havells Sylvania Group and is one of the world's largest manufacturers of artificial light sources. It has a broad product offering that includes incandescent, halogen, CFL, HID and LED lamps, alongside various specialist lamps for specific applications segments such as sun tanning, germicidal, agricultural and entertainment.

European manufacturing and logistics centres in France, Belgium and Germany ensure high quality and fast delivery to every customer. Sylvania lamps are distributed from stock, through national sales operations, as well as via individual countries' professional distribution channels such as wholesalers, specifiers and installers; as well as to the consumer via the retail channel.



Tienen – Belgium



Erlangen – Germany

A new dawn for tanning

We have been making tanning lamps for more than 30 years. Today, our manufacturing facilities in Germany and Belgium are putting all that experience, innovation and support into making the highest quality tanning lamps on the market.

Tanning lamps create ultraviolet light, the main source of Vitamin D, which the body needs for healthy bones. The sun is a natural source of UV but it is hard to control exposure to sunlight even when the weather and life allow.

PureSun lamps are designed to be a safe alternative to natural sunlight. Our clever design not only improves performance but also helps us reach environmental targets.

With our manufacturing base in Europe, we are well equipped to deliver our innovative, best-in-class products, respond quickly to demand, and offer all our customers the very best service.



PureSun™

Improving standards by association

We are proud to be a member of the European Sunlight Tanning Association (the ESA) as part of our role in maintaining standards and promoting responsible tanning practice.

Our new PureSun tanning lamps contain very little mercury – just 10mg – significantly less than the amount needed to ensure that they comply with the European Directive known as ROHS.

ESA – European Sunlight Association
www.europeansunlight.eu

TSA – The Sunbed Association
www.sunbedassociation.org.uk

MSZUE – Hungarian Solarium Operators Association
www.mszue.eu



More UV output and longer life

Sylvania has created the best tanning lamps on the market by identifying three opportunities for design improvement.



UV phosphor – only the best is good enough

Our new PureSun range uses advanced materials and technology to provide both an improved tan for the customer and a longer life lamp for the salon owner. The choice of phosphor is crucial to PureSun’s success. Our secret lies in selecting phosphor with the ideal UVA/UVB ratio for direct and indirect tanning.

In addition to this, we use a high-tech process called Chemical Vapour Deposition to ensure the purity of the phosphor in each lamp, resulting in a reduction in UV loss over time.

Mercury content – less than 10mg

The Mercury (Hg) discharge is the engine that determines the efficiency of the lamps. Without Mercury the lamp switches off, but if there is too much Mercury the UV output of the lamp does not become stable and cannot reach its maximum UV output. This phenomena is what you experience as uneven ‘colour’ and is often called a ‘dull effect’ by end users.

Sylvania can fill all T12 sun tanning lamps with a precise amount of Mercury – less than 10mg – using a unique, patented method. EU environmental legislation requires less than 15mg of Mercury – so our lamps are well below this limit.

Advanced manufacturing ensures gas purity inside each lamp

The advanced technology that goes into PureSun lamps includes manufacturing processes designed to ensure a top quality product. For example, we use the world’s fastest T12 lamp manufacturing line, which is fully automated to avoid human error.

And, unlike our competitors, we use a method called ‘horizontal exhausting’ to ensure that the gas in our lamps is free of impurities. With 30 years of development history, these are the longest lasting lamps we have ever made.



The manufacturing production line in Erlangen, Germany.

A breakthrough in tanning technology

Even the best conventional tanning lamps lose performance very quickly, which means less effective tanning sessions and a frequent replacement. After 18 months of research and development, our experts have found the answer.

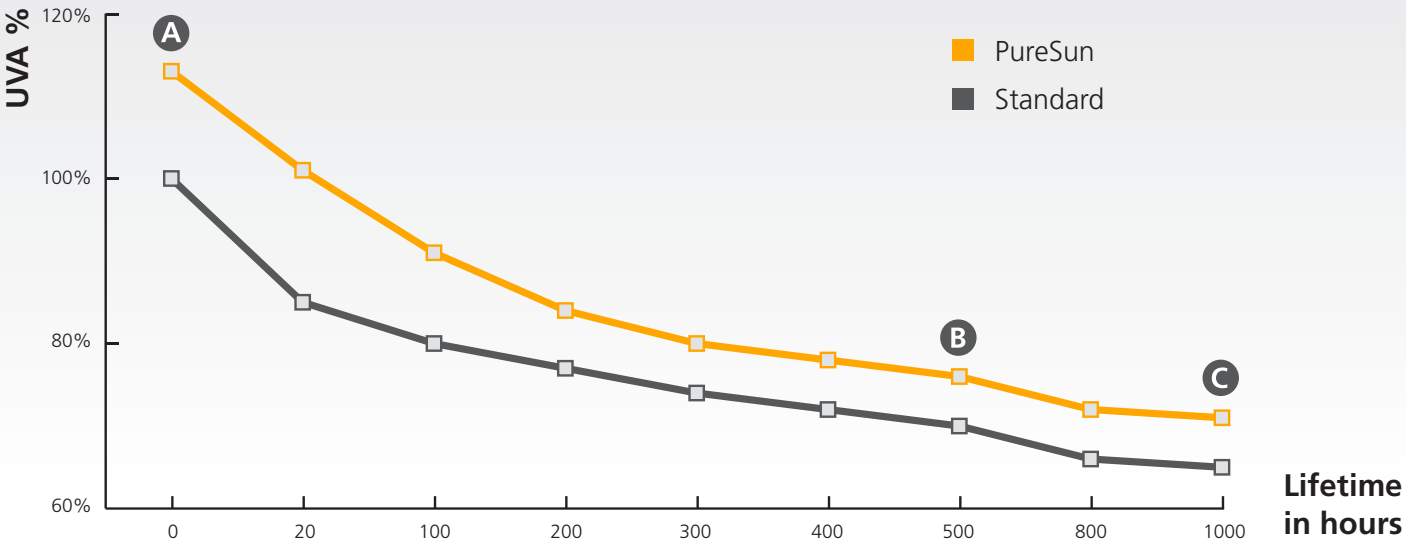


The problem with ordinary tanning lamps

The problem with ordinary tanning lamps is that the UV they produce drops dramatically after a very short time. Typically 10-15% in the first five hours of use. That means tanning sessions have to be longer to achieve the same skin results. Lamp life shortens as UV levels drop further, their colour drifts and output becomes unstable.

PureSun – New technology for enhanced performance

Our new Sylvania PureSun tanning lamps start life with 12% more UV and they lose it far more slowly. So slowly that after 500 hours they have the same UV intensity as a 'standard' long life lamp would have at the early hours of its life. It's this dramatic improvement that makes PureSun lamps the best-in-class for UV maintenance, providing higher UVA-output for deep, longer-lasting skin darkening.



A 12% higher initial UV reading at 0hrs. Only 5% drop in UV between 0-5hrs. Best-in-class UV depreciation. Guaranteed UV stability.

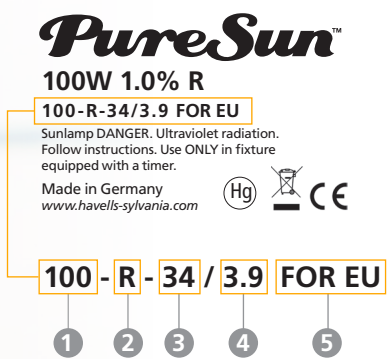
B At 500hrs – we have the same UV intensity as standard 'longlife' lamps have at a much earlier stage in their life.

C At 1,000hrs – Maximum 30% loss compared to initial UVA.

Introducing PureSun

The new name in sun tanning

We are pleased to introduce our new ranges of sun tanning lamps that will meet all your requirements.



- 1 WATTAGE CODE**
Nominal wattage of the recommended ballast which is used for the measurement. It can be different than the ballast in the application.
- 2 REFLECTOR CODE**
 - O for non-reflector lamps
 - B for lamps with broad reflector angle $\alpha > 230^\circ$
 - N for lamps with narrow reflector angle $\alpha < 200^\circ$
 - R for lamps with regular reflector $200^\circ \leq \alpha \leq 230^\circ$
- 3 X CODE**
 E_{er} [mW/m²] Total erythema irradiance over range 250nm-400nm
- 4 Y CODE**
 $E_{NMSC < 320nm} / E_{NMSC > 320nm}$ ratio of the NMSC effective.
- 5 EU CODE**
Shows that the lamp suitable for 0.3 regulation with high probability.

PureSun – HOT

PureSun HOT lamps are long-lasting premium products that produce considerable amounts of UVB and UVA. These lamps are strong enough to reach very short session times in any tanning equipment. PureSun HOT is designed to give your customers immediate colour using higher UVA and UVB levels.

Premium lamps with higher output, universal results and true 1000 hour life make it a major advancement in the tanning. Proprietary phosphors give a superlative tanning experience and quick results. They not only deliver an exceptional tan but offer a long service life too – you can expect this from all PureSun lamps.



PureSun – Gentle

PureSun is designed to tan gently, within the limits set by EU regulations governing all types of tanning equipment. Based on scientific research, these limit photo-biological irradiance values to 0.3 W/m², which is equivalent to the summer sun at midday in the Mediterranean. In other words: the safe, maximum level is what we have evolved to enjoy, naturally.

PureSun's long-lasting UV stability guarantees constant session times even after hundreds of hours. And PureSun operates at the precise spectrum of wavelengths required for maximum tanning effect, but with reduced irradiance. So, it offers exactly the right balance for reliable, even and gentle tanning, time and again. Advanced design and manufacturing quality ensures that PureSun consistently outshines the competition for amazing results.



	Mount design	Reflector (°)	Item number	Wattage (W)	Lifetime *** (hrs)	Length (cm)	Typical radiation strength* (mW/cm²)	UVB (%)	UVA (W)	Sun/Ery Factor (Fse)	Tanning Time ST3** (min)	UV-code
T5 LAMPS												
PureSun 25W 1.5%		0	0073014	25	600	52	16	1.5	5.5	0.07	14	25-O-20/6.5
T12 160W-R 1.76CM LAMPS												
PureSun 160W 1.6% R PEAK	Short	227	0071264	160	1000	176	20	1.6	38	0.21	10	160-R-56/5.8
PureSun 160W 2.0% R	Short	227	0071221	160	1000	176	23	2.0	38	0.24	9	160-R-85/6.5
PureSun 160W 2.3% R	Short	227	0071226	160	1000	176	23	2.3	38	0.27	8	160-R-93/7.5
PureSun 160W 2.6% R	Short	227	0071223	160	1000	176	23	2.6	38	0.27	6	160-R-103/8.2
PureSun 160W 3.3% R	Short	227	0071283	160	1000	176	23	3.3	33	0.31	4	160-R-120/10.4
PureSun 160W 3.6% R	Short	227	0071284	160	1000	176	23	3.6	38	0.34	3	160-R-132/11.0
PureSun 160W 3.6% R LONGMOUNT	Long	227	0071307	160	1000	176	28	3.6	46	0.46	3	160-R-148/11.3
T12 180W EXTRA LONG LAMPS												
PureSun 180W 3.3% R 1.9m	Short	227	0071245	180-200	1000	190	23	3.3	41	0.32	4	180-R-125/10.4
PureSun 180W/250 2.6% R 2m	Short	227	0071237	180-200	1000	200	23	2.6	42	0.27	6	180-R-103/8.2
PureSun 180W 3.6% R 2m	Short	227	0071285	160-200	1000	200	23	3.6	41	0.35	3	180-R-137/11.0
PureSun 180/250W 2.3% R LONGMOUNT 2m	Long	227	0071258	180-250	1000	200	28	2.3	50	0.35	5.5	180-R-110/7.8
PureSun 180/250W 3.0% R LONGMOUNT 2m	Long	227	0071318	180-250	1000	200	32	3.0	53	0.41	4	180-R-125/10.0

Please note: SYLVANIA tanning tubes and lamps should only be used with appropriate consideration of the type of equipment in use as well as the person's specific skin type. You can find details on this on the page 12.

	Mount design	Reflector (°)	Item number	Wattage (W)	Lifetime *** (hrs)	Length (cm)	Typical radiation strength* (mW/cm²)	UVB (%)	UVA (W)	Sun/Ery Factor (Fse)	Tanning Time ST3** (min)	UV-code
T5 LAMPS												
PureSun 15W 1.0%		0	0073012	15	600	28.8	16	1.0	2.8	0.03	21	15-O-7/3.8 FOR EU
PureSun 25W 1.0%		0	0073009	25	600	52	16	1.0	5.5	0.03	20	25-O-7/3.8 FOR EU
T12 100W LAMPS												
PureSun 100W 0.7%	Short	0	0071180	100	800	176	17	0.8	27	0.04	24	100-O-15/2.6 FOR EU
PureSun 100W 1.3%	Short	0	0071181	100	800	176	17	1.3	27	0.06	20	100-O-17/3.0 FOR EU
PureSun 100W 2.0%	Short	0	0071182	100	800	176	17	2.0	27	0.10	12	100-O-17/3.9 FOR EU
PureSun 100W 1.0% R	Short	227	0071201	100	800	176	20	1.0	30	0.10	19	100-R-35/4.1 FOR EU
PureSun 100W 1.3% R	Short	227	0071301	100	800	176	18	1.3	26	0.10	18	100-R-32/4.2 FOR EU
T12 160W-R												
PureSun 160W 0.5% R	Short	227	0071267	160	1000	176	23	0.5	36	0.06	23	160-R-27/2.3 FOR EU
PureSun 160W 0.6% R PEAK	Short	227	0071320	160	1000	176	25	0.6	38	0.08	22	160-R-27/2.3 FOR EU
PureSun 160W 0.7% R	Short	227	0071217	160	1000	176	21	0.7	33	0.08	22	160-R-31/2.1 FOR EU
PureSun 160W 0.8% R PEAK	Short	227	0071281	160	1000	176	25	0.8	38	0.09	17	160-R-34/3.1 FOR EU
PureSun 160W 1.0% R	Short	227	0071214	160	1000	176	21	1.0	33	0.10	18	160-R-38/2.9 FOR EU
PureSun 160W 1.0% R PEAK	Short	227	0071234	160	1000	176	25	1.0	38	0.13	14	160-R-45/3.8 FOR EU
PureSun 160W 0.7% R PEAK LONGMOUNT	Long	227	0071275	160	1000	176	28	0.7	46	0.12	17	160-R-36/3.0 FOR EU
T12 180W-R EXTRA LONG LAMPS												
PureSun 180/200W 0.7% R 1.9m	Short	227	0071302	180-200	1000	190	23	0.7	41	0.08	22	180-R-30/2.0 FOR EU
PureSun 180/200W 0.7% R 2m	Short	227	0071299	180-200	1000	200	23	0.7	41	0.08	22	180-R-31/2.0 FOR EU
PureSun 180/250W R 0.5% PEAK LONGMOUNT 2m	Long	227	0071274	180-250	1000	200	28	0.4	51	0.08	23	180-R-27/2.0 FOR EU



HID



Type	Item Number	Wattage (W)	Base / Cap	Lifetime ** (hrs)	Quartz type	Length* (mm)	Max Diameter (mm)
PureSun 250W SE	0034250	250	GY9.5	600	FDA	70.5	14
PureSun 250W SER	0034251	250	Special	600	FDA	76	14
PureSun 300/500W S	0034300	300/500	R7s	800	OZF	104	14
PureSun 300/500W SL	0034201	300/500	R7s long	600	OZF	117.9	14
PureSun 300/500W SE	0034303	300/500	GY9.5	800	OZF	103	14
PureSun 300/500W SEC	0034228	300/500	GK9.5	600	OZF	103	14
PureSun 300/500W C	0034202	300/500	K8s	600	OZF	116	14
PureSun 400/600W S	0034210	400/600	R7s	600	OZF	104	17
PureSun 400/600W SL	0034263	400/600	R7s long	600	OZF	117.9	17
PureSun 400/600W SF	0034400	400/600	Fu14s	600	FDA	159	17
PureSun 400/600W SE	0034212	400/600	GY9.5	600	OZF	107	17
PureSun 400/600W SEC	0034261	400/600	GK9.5	600	OZF	107	17
PureSun 400/600 SE-G12	0034227	400/600	G12	600	OZF	107	17
PureSun 400/600W C	0034211	400/600	K8s	600	OZF	114	17
PureSun 650/800W S	0034265	650/800	R7s	600	FDA	117.9	19
PureSun 650/800W SF	0034401	650/800	Fu14s	600	FDA	159	19
PureSun 650/800W C	0034264	650/800	K8s	600	FDA	117	19
PureSun 650/800W CL	0034226	650/800	K8s	600	FDA	129	19
PureSun 1000W SF	0034402	1000	Fu14s	600	FDA	173	26
PureSun 1000W SE	0034223	1000	GY9.5	600	OZF	110	26
PureSun 1000W SE Long	0034222	1000	GQ9.5	600	OZF	131	26
PureSun 1000W SE-G12	0034460	1000	G12	600	OZF	110	26
PureSun 1000W C 230V	0034220	1000	K10s	600	OZF	139	26
PureSun 1000W C 400W	0034221	1000	K10s	600	OZF	139	26
PureSun 1000W CL 230V	0034225	1000	K10s	600	OZF	156	26

S = R7s
SL = R7s Long
SE = GY9.5
SEC = GK9.5
SE-G12 = G12
SER = SE for Reflector
C = Cable
CL = Cable Long

*For Cable types : base-to-base
For R7s types : base-to-contact
For Fu14s types : pin-to-pin
For SE types : length without pins

** 70% UVA maintenance

STARTER

Type	Order Number	Wattage (W)	VOLTAGE (V)	Lifetime Nr. of ignitions	Electronic circuit	Packaging unit
PureSun 100-180W	0024479	100-180	220/240	20,000	Single	25

Visit www.puresun-tanning.com for more product information.

Please note: SYLVANIA tanning tubes and lamps should only be used with appropriate consideration of the type of equipment in use as well as the person's specific skin type. You can find details on this below.

High-altitude sun – CAUTION – Ultraviolet (UV) and infrared radiation. Please observe instructions for use. UV and infrared radiation from studio tubes carries with it a number of health risks and can cause, among other things, cancer, premature skin aging, burns, injuries to the eyes, cataracts, a weakening of the immune system, allergic reactions and injuries to the vascular system. Pregnant women and persons taking prescription or over-the-counter pharmaceuticals should consult their physician's prior to tanning in a studio. The simultaneous ingestion of such medications as sedatives, antibiotics, diuretics or lower blood pressure medications, anti-neo-plastics or contraceptives can lead to the development of sunburn more quickly because such pharmaceuticals increase the skin's sensitivity to light. The same applies to cosmetics. UV radiation can accelerate the aging process of your skin and increase the risk of skin cancer, for instance squamous cell carcinoma or basal cell carcinoma. Your skin cancer risk is greater the more often you are exposed to UV radiation. Those who do not tan under direct sunlight will usually not tan in a tanning studio either and, in addition, such persons will also expose themselves to a greater danger of experiencing the detrimental effects of tanning lamps. If you do not tan in direct sunlight, then you should avoid tanning lamps. UV exposure in childhood is suspected of favouring the formation of melanoma in adulthood. Therefore, children should not use tanning studios without check-ups by a physician.

NEVER TAN WITHOUT USING SUITABLE PROTECTION FOR YOUR EYES (UV PROTECTIVE EYEWEAR)! WITHOUT EFFECTIVE EYE PROTECTION, YOU RUN THE RISK OF SERIOUS BURNS TO THE EYE OR A LONGER TERM IMPAIRMENT OF VISION!

Use tanning lamps ONLY with a timer and in conformity with instructions from the manufacturers of both the equipment and the lamps, also in proper consideration of your skin type. Before installing the lamps or switching out the tubes, take all appropriate safety precautions and observe the instructions of the manufacturers of the tanning equipment and the light sources used.

Exclusion of liability: Havells Sylvania will not be liable for injuries resulting from the improper use of its products or from not adhering to legal and regional regulations as to the use of such products by its customers or final users. All the data presented here is the result of measurements made under standardised laboratory conditions. Details on the certification of UVA radiation and the guaranteed service life of the equipment are based on a 5-hour value and refer to operational conditions defined by Havells Sylvania. Havells Sylvania reserves the right to change this technical data without any prior announcement.

This information is not legally binding consultation and cannot replace such consultation. We recommend that you remain up-to-date in an appropriate manner as to all developments, particularly those concerning the conversion of European Guidelines into national law, e.g. by consulting a solicitor or a qualified professional association.

Promotional giveaways and point-of-sale

Below is selection of promotional items that PureSun can offer its customers.



Sunbed Towel



Branded Polo / T-Shirt



Sunbed Eye Protection



Sunbed Cleaning Spray



Branded Mug

Stickers and Magnets

1. Regular gloss paper sticker



2. Vinyl window sticker



3. Magnet (fridge)



PURE COLLAGEN™ – PURE ANTI-AGING

The revolutionary new light for youthful skin

Collagen is a biological, autologous building block and important part of human skin which provides elasticity and strength to the skin. Fibroblasts (Collagen producing cells) continuously produce new collagen fibres. By the increased generation of Collagen fine lines are reduced, the skin is visibly tightened and the visual appearance of the skin is improved.

PURE COLLAGEN™ – PURE ANTI-AGING

Beauty, attractiveness and wellness



Sylvania sets a new standard in Collagen Light Therapy.

The advanced design of both high and low pressure lamps features a novel and unique spectrum. The high energy output enables the skin to support the maximum rate of collagen regeneration.

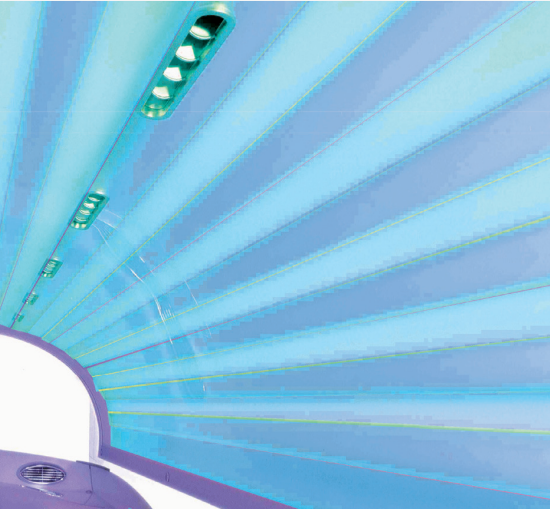


Tubes	Order number	Wattage (W)	Lifetime (hrs)	Length (cm)
PC Active500 15W	0003001	15	600	180
PC Active500 25W	0003002	25	600	180
PC Active500 100W R	0001315	100	600	180
PC Active500 160W R	0001316	160	600	180
PC Active500 120W R 2m	0001324	120	600	180
PCC Active500 180/250W R 2m	0001317	200-250	600	200

High pressure	Order number	Wattage (W)	Base/Cap	Lifetime (hrs)	Max length (mm)
PC HighActive 400W SE (Single ended)	0024281	400	GY 9,5	600	103,0
PC HighActive 400W DE (Double ended)	0024280	400	R7s	600	106,0



Collagen mode with PURE COLLAGEN™



Sun tanning mode with standard UV tubes

EUROPE

Head Office

London
info.eu@havells-sylvania.com

Austria

Vienna
T. +43 (0)1617 4480
F. +43 (0)1617 4481
info.at@havells-sylvania.com

Belgium

Antwerp
T. +32 (0)3 610 44 44
F. +32 (0)3 610 44 57
info.be@havells-sylvania.com

Czech Republic, Slovakia, Slovenia and Croatia

Erlangen
T. +49 9131 793 143
F. +49 9131 793 468
info.cz@havells-sylvania.com

Estonia, Latvia, Lithuania

Tallinn
T. +372 530 577 95
F. +372 530 704 69
info.bal@havells-sylvania.com

Finland

Helsinki
T. +358 (0)9 5421 2100
F. +358 (0)9 5421 2130
info.fi@havells-sylvania.com

France

Paris
T. +33 (0)1 55 51 11 00
F. +33 (0)1 55 51 11 15
info.fr@havells-sylvania.com

Germany

Frankfurt
T. +49 (0)69795 88850
F. +49 (0)69795 888531
info.de@havells-sylvania.com

Greece

Athens
T. +30 210 996 65 61
F. +30 210 996 90 29
info.gr@havells-sylvania.com

Hungary

Budapest
T. +36 (30) 50 69 182
F. +36 (24) 423 563
info.hu@havells-sylvania.com

Italy

Milan
T. +39 02 24 12 58 11
F. +39 02 24 12 58 80
info.it@havells-sylvania.com

Netherlands

Breda
T. +31 (0)76 750 44 44
F. +31 (0)76 750 44 56
info.nl@havells-sylvania.com

Norway

Oslo
T. +47 23 067470
F. +47 23 067471
info.no@havells-sylvania.com

Poland

Warsaw
T. +48 22 811 60 32
F. +48 22 811 60 33
info.pl@havells-sylvania.com

Portugal

Lisbon
T. +351 21 793 77 36/37
F. +351 21 793 77 38
info.pt@havells-sylvania.com

Romania / Bulgaria

Bucharest
T. +40 (0) 720 724 647
info.ro@havells-sylvania.com

Russia

Moscow
T. +7 495 935 70 48
F. +7 495 937 70 08
info.ru@havells-sylvania.com

Spain

Madrid
T. +34 91 669 90 00
F. +34 91 673 73 64
info.es@havells-sylvania.com

Sweden

Stockholm
T. +46 8 556 322 00
F. +46 8 556 322 10
info.se@havells-sylvania.com

Switzerland

Zurich
T. +41 44305 31 80
F. +41 44305 31 81
info.ch@havells-sylvania.com

Turkey

Istanbul
T. +90 216 594 54 70
F. +90 216 594 54 72
info.tr@havells-sylvania.com

UK

Newhaven
T. +44 870 606 2030
F. +44 1273 512 688
info.uk@havells-sylvania.com

MIDDLE EAST

United Arab Emirates

Dubai
T. +971 4 2998141
F. +971 4 2998142
info.ae@havells-sylvania.com

ASIA

China

Guangzhou
T. +86 20 3815 1138
F. +86 20 3869 7572
info.cn@havells-sylvania.com

India

Noida
T. +91 120 477 1000
F. +91 120 477 2000
marketing@havells.com

Malaysia

Kuala Lumpur
T. +603 2031 8788
F. +603 2031 4788
info.my@havells-sylvania.com

Thailand

Bangkok
T. +66 2656 9039
F. +66 2254 3369
info.th@havells-sylvania.com

Vietnam

Hanoi
T. +844 37 151 604
F. +844 37 151 605
info.vn@havells-sylvania.com

AMERICAS

Argentina, Paraguay, Uruguay

Buenos Aires
T. +54 11 4546 4200
F. +54 11 4546 4228
info.ar@havells-sylvania.com

Brazil

São Paulo
T. +55 11 3133 2400
F. +55 11 5521 3660
info.br@havells-sylvania.com

Caribbean

Honduras, Nicaragua

San José
T. +506 22 107 678
F. +506 22 328 723
info.cr@havells-sylvania.com

Chile

Santiago
T. +56 2 365 1767
F. +56 2 365 1772
info.cl@havells-sylvania.com

Colombia

Santafé de Bogotá
T. +57 1 782 5200
F. +57 1 719 9621
info.co@havells-sylvania.com

Costa Rica

San José
T. +506 22 107 678
F. +506 22 200 338
sales@havells-sylvania.com

Ecuador

Quito
T. +593 2 328 4407
F. +593 2 281 0007
info.ec@havells-sylvania.com

El Salvador

San Salvador
T. +503 2239 2239
F. +503 2284 9670
info.sv@havells-sylvania.com

Guatemala

Guatemala City
T. +502 2387 5300
F. +502 2387 5301
info.gt@havells-sylvania.com

Mexico

Mexico D.F.
T. +52 55 5387 7670
F. +52 55 5387 7671
info.mx@havells-sli.com

Panama

Panama City
T. +507 236 1000
F. +507 236 1315
info.pa@havells-sylvania.com

USA

Atlanta, GA
T. +1 678 420 3700
F. +1 404 349 2434
www.havells-usa.com

Venezuela

Caracas
T. +58 212 381 0452
F. +58 212 381 0350
info.ve@havells-sylvania.com